

Copyright © 2005 by Elsevier Inc.

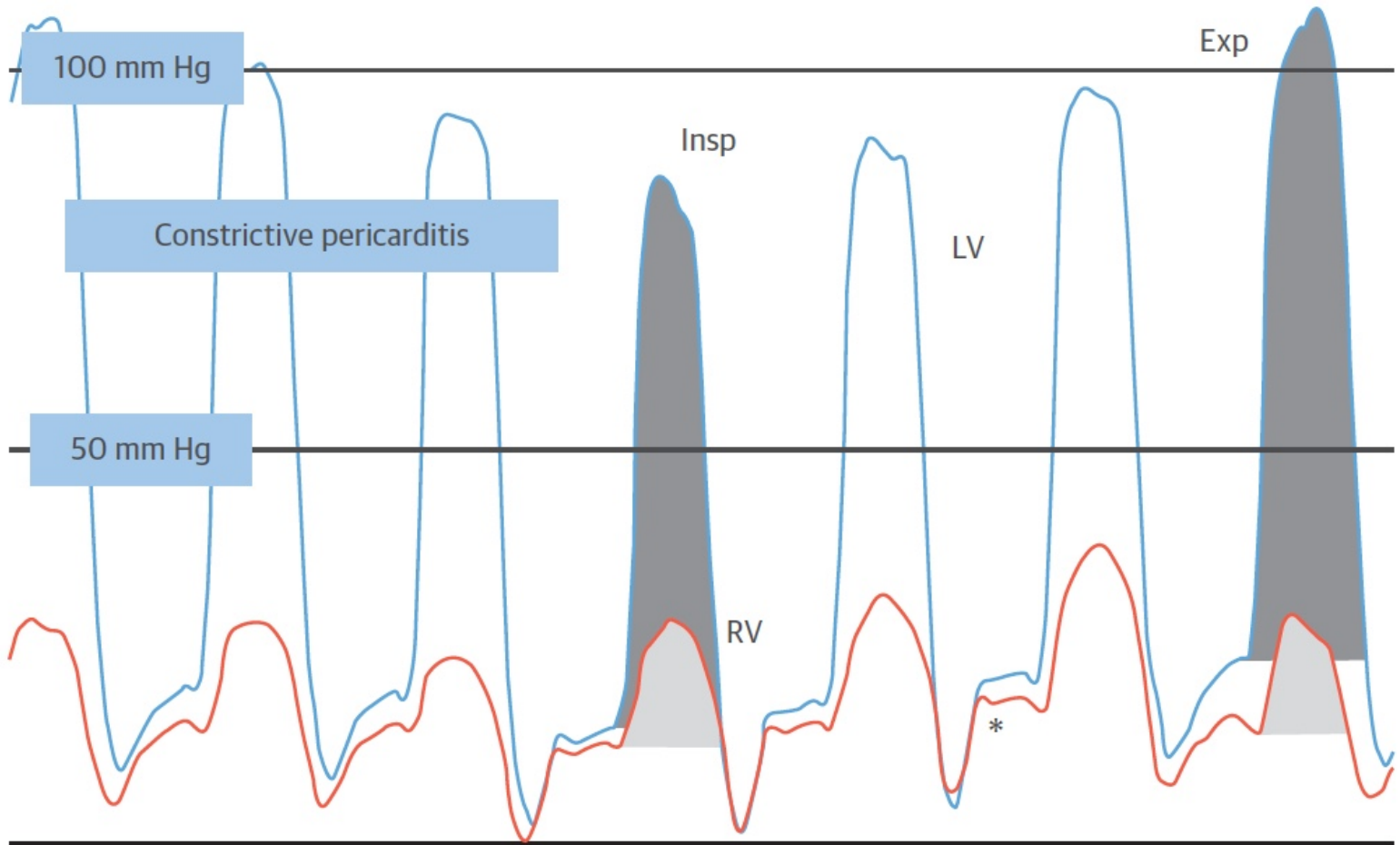


TABLE 1 Echocardiographic Characteristics of Surgically Confirmed CP

Criterion	Sensitivity	Specificity	PPV	NPV
1. Ventricular septal shift	93	69	92	74
2. Change in mitral E velocity >14.6%	84	73	92	55
3. Medial e' velocity >9 cm/s	83	81	94	57
4. Medial e'/lateral e' \geq 0.91	75	85	95	50
5. Hepatic vein diastolic reversal velocity/ forward velocity in expiration \geq 0.79	76	88	96	49
1 and 3	80	92	97	56
1 with 3 or 5	87	91	97	65
1 with 3 and 5	64	97	99	42

Values are %. Reprinted with permission from Welch et al. (43).

CP = constrictive pericarditis; E = early diastolic mitral inflow Doppler velocity; e' = early diastolic mitral annular tissue Doppler velocity; NPV = negative predictive value; PPV = positive predictive value.

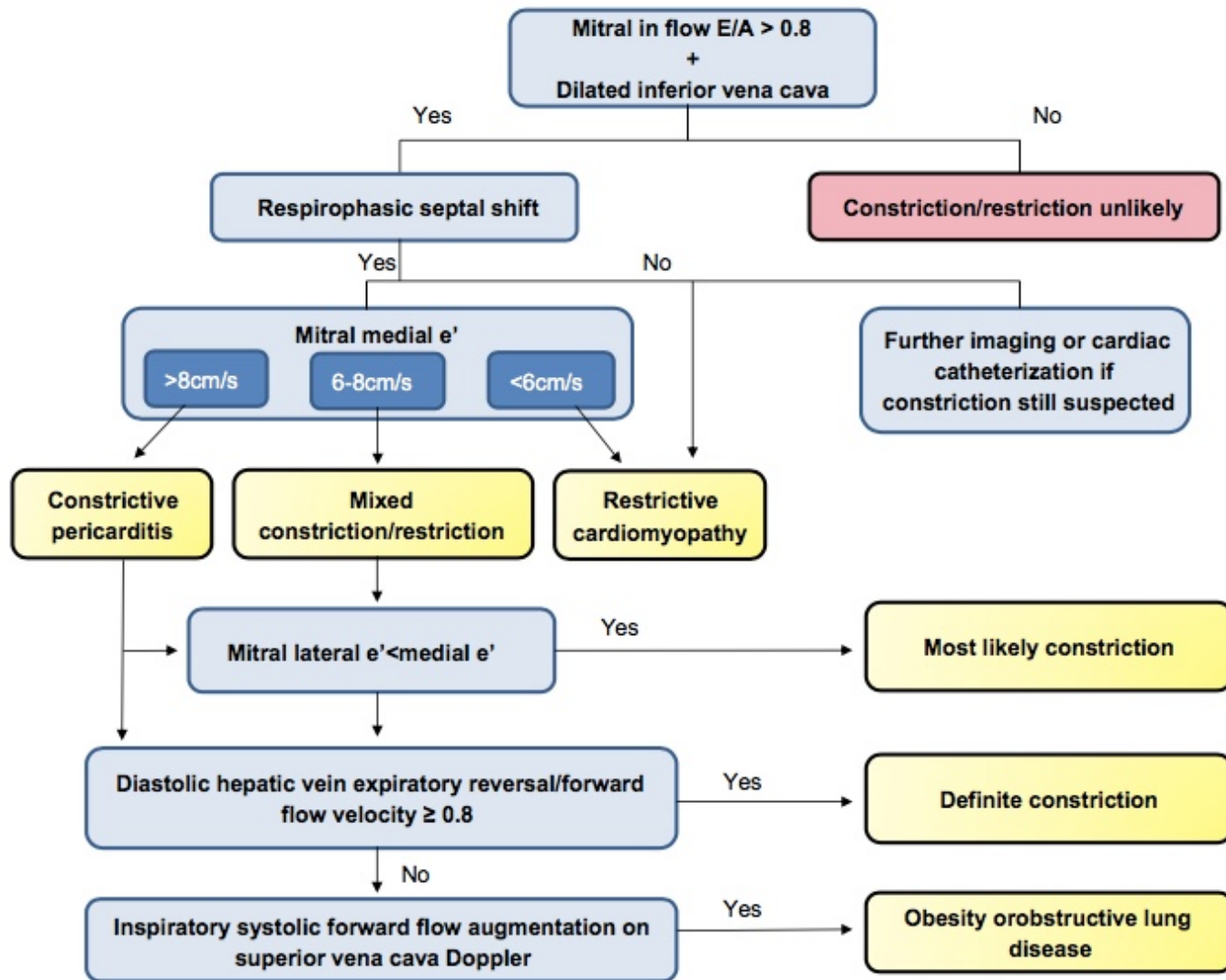


Fig 4 – Algorithm illustrating the diagnosis of constrictive pericarditis by transthoracic echocardiography (A – late mitral inflow velocity; E – early mitral inflow velocity; e' – early diastolic mitral annulus velocity).

Echocardiographic Diagnosis of Constrictive Pericarditis

Mayo Clinic Criteria

Terrence D. Welch, MD; Lieng H. Ling, MBBS, MD; Raul E. Espinosa, MD;
Nandan S. Anavekar, MBBCh; Heather J. Wiste, BA; Brian D. Lahr, MS; Hartzell V. Schaff, MD;
Jae K. Oh, MD

Circ Cardiovasc Imaging. 2014;7:526-534.

Differentiation of Constriction and Restriction

Complex Cardiovascular Hemodynamics

Jeffrey B. Geske, MD, Nandan S. Anavekar, MD, Rick A. Nishimura, MD, Jae K. Oh, MD,
Bernard J. Gersh, MBBCh, DPHIL

J Am Coll Cardiol 2016;68:2329-47