

**18TH ANNUAL CANADIAN ECHO WEEKEND
APRIL 7-9, 2016
TORONTO, ON**

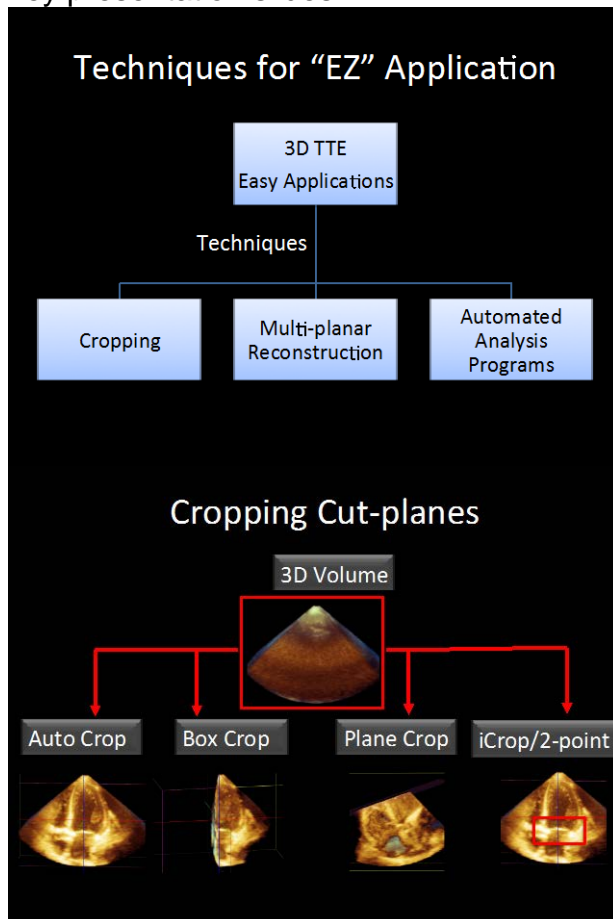
Session Title: ED TTE – EZ Applications

Presenter/Author: Dr. Wendy Tsang

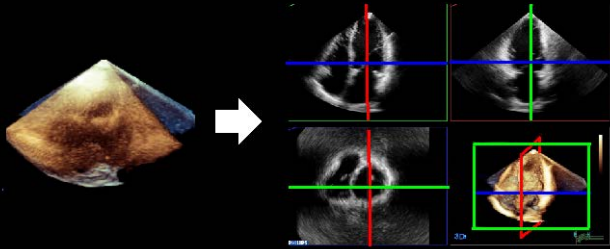
OBJECTIVES: What questions or points will participants learn or discuss?

1. Understand the methods that can be easily used to analyze 3D TTE
2. Understand the applications of these methods to 3D TTE in daily practice.
3. _____

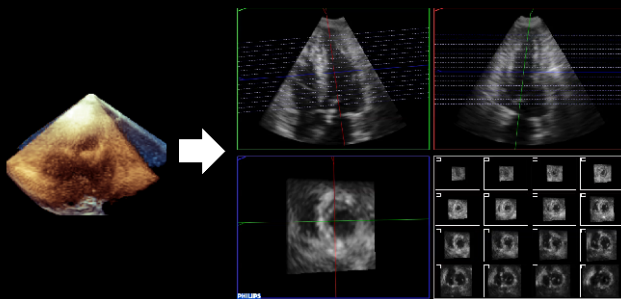
DISCUSSION: Please provide a summary of the discussion and/or include 3 to 6 key presentation slides.



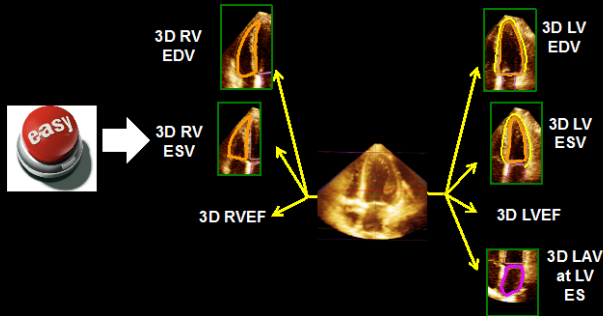
Multi-planar Reconstruction



Tomographic Slices LV Function Assessment



Automated Analysis



CONCLUSIONS:

“EZ” Applications	
Technique	Application
Cropping	<ul style="list-style-type: none">• Display and understand the anatomy<ul style="list-style-type: none">• Tricuspid valve• Complex congenital valve
Multi-planar reconstruction	<ul style="list-style-type: none">• Improve measurements<ul style="list-style-type: none">• MV planimetry• LVOT• Improves LV and RV assessment
Automated Analysis Programs	<ul style="list-style-type: none">• LV volumes• LA volumes• RV volumes• SV measurement• MV

REFERENCES: (journals, websites, etc.)

Lang RM and Badano LP et al. Recommendations for Cardiac Chamber Quantification by Echocardiography: An Update from the American Society of Echocardiography and the European Association of Cardiovascular Imaging. J Am Soc Echocardiogr. 2015;28(1):1-39
