



Hôpital général juif
Jewish General Hospital



Centre universitaire de santé McGill
McGill University Health Centre

TRANSCATHETER CLOSURE OF ASD

Igal A. Sebag, MD, FRCPC, FACC, FASE

Associate Professor of Medicine, McGill University

Jewish General Hospital, McGill University

2015 CSE Annual Meeting

Objectives

Determine the role of echocardiography for transcatheter closure of ASD using

(1) 2-D TEE

- (Pre-) Case selection and planning (type, size, tissue rims, pulmonary vein return)**
- (Intra-) Guidance**
- (Post-) Recognition of early post-procedural complications**

(2) 3-D TEE

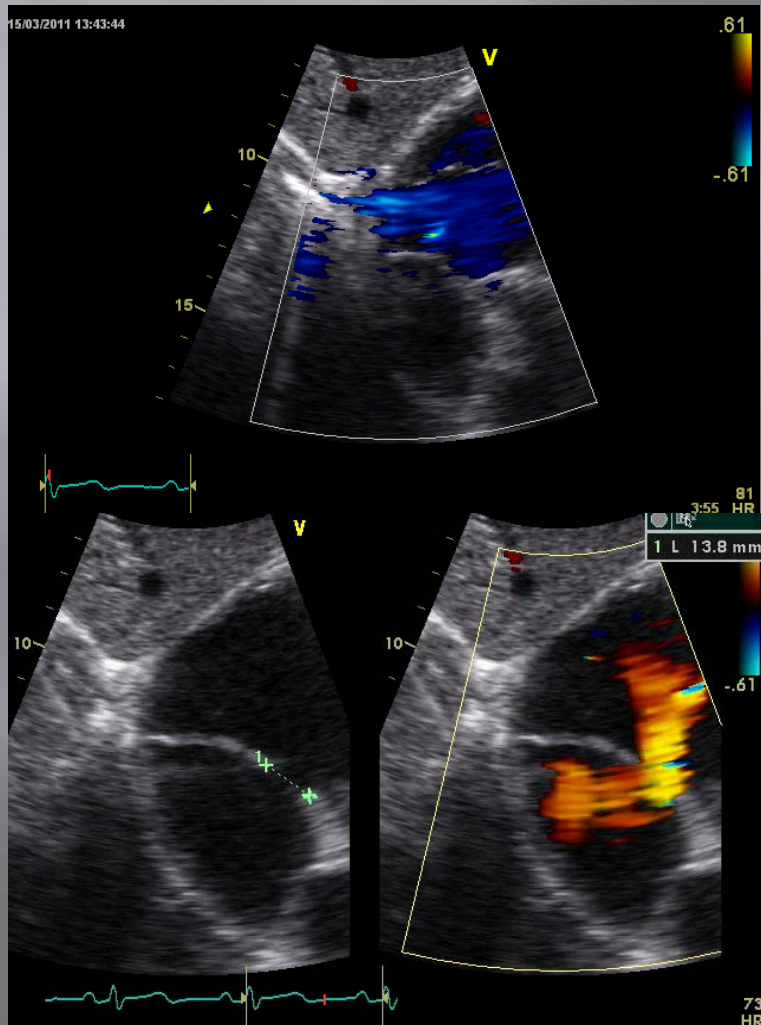
What does the
interventionalist want to
know?

Case Selection and Planning

- (1) Type (secundum)
- (2) Size (< 40 mm)
- (3) Single
- (4) Adequate tissue rims
- (5) Absence of anomalous pulmonary vein drainage
- (6) No intra-cavitary thrombus

(1) ASD type

Secundum / sub-costal



Primum / apical 4-C

